

2007 ATRI Study

FATAL CRASHES			
Driver Age	Fatal Crashes	Crash Percentage	Population by Age Percentage
25 and Under	<b>281</b>	<b>5.80%</b>	<b>5%</b>
26 - 35	<b>984</b>	<b>20.20%</b>	<b>21%</b>
36 - 45	<b>1,375</b>	<b>28.20%</b>	<b>27%</b>
46 - 55	<b>1,369</b>	<b>28.00%</b>	<b>30%</b>
56 - 65	<b>701</b>	<b>14.40%</b>	<b>10%</b>
66 - 75	<b>139</b>	<b>2.80%</b>	<b>3%</b>
76 and Over	<b>15</b>	<b>0.30%</b>	<b>1%</b>
Unknown	<b>17</b>	<b>0.30%</b>	<b>3%</b>
<b>Total</b>	<b>4,881</b>	<b>100.00%</b>	<b>100%</b>

25 and Under	26 - 35
5.80%	20.20%
5.00%	21.00%

INJURY CRASHES			
Driver Age	Injury Crashes	Crash Percentage	Population by Age Percentage
25 and Under	<b>8,000</b>	<b>9.60%</b>	<b>5%</b>
26 - 35	<b>18,000</b>	<b>22.20%</b>	<b>21%</b>
36 - 45	<b>24,000</b>	<b>29.90%</b>	<b>27%</b>
46 - 55	<b>20,000</b>	<b>24.60%</b>	<b>30%</b>
56 - 65	<b>9,000</b>	<b>11.30%</b>	<b>10%</b>
66 - 75	<b>2,000</b>	<b>2.40%</b>	<b>3%</b>
76 and Over	<b>*</b>	<b>0.10%</b>	<b>1%</b>
Unknown	<b>*</b>	<b>*</b>	<b>3%</b>
<b>Total</b>	<b>81,000</b>	<b>100.00%</b>	<b>100%</b>

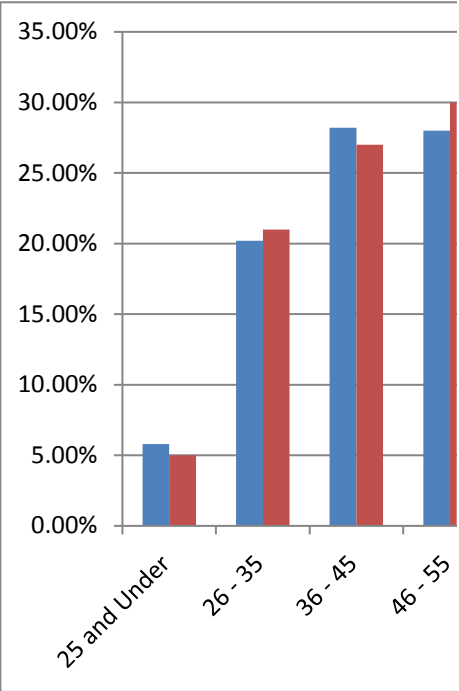
25 and Under	26 - 35
9.60%	22.20%
5.00%	21.00%

PROPERTY DAMAGE CRASHES			
Driver Age	Property Damage Crashes	Crash Percentage	Population by Age Percentage
25 and Under	<b>60,000</b>	<b>17.10%</b>	<b>5%</b>
26 - 35	<b>81,000</b>	<b>22.90%</b>	<b>21%</b>
36 - 45	<b>89,000</b>	<b>25.10%</b>	<b>27%</b>
46 - 55	<b>84,000</b>	<b>23.80%</b>	<b>30%</b>

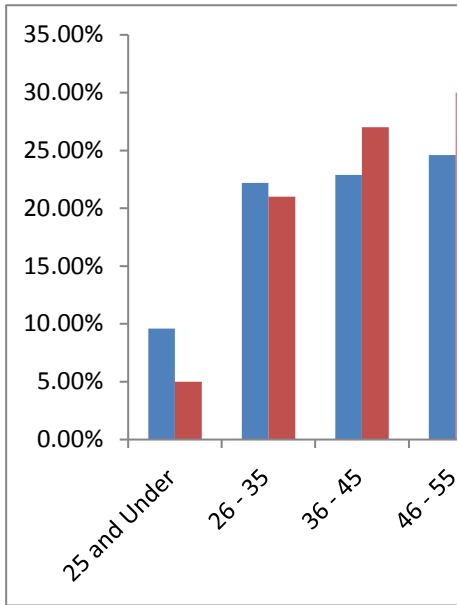
25 and Under	26 - 35
17.10%	22.90%
5.00%	21.00%

56 - 65	31,000	8.90%	10%
66 - 75	7,000	2.00%	3%
76 and Over	1,000	0.10%	1%
Unknown	*	*	3%
Total	81,000	100.00%	100%

36 - 45	46 - 55	56 - 65	66 - 75	76 and Over	Unknown
28.20%	28.00%	14.40%	2.80%	0.03%	0.03%
27.00%	30.00%	10.00%	3.00%	1.00%	3.00%



36 - 45	46 - 55	56 - 65	66 - 75	76 and Over	Unknown
22.90%	24.60%	11.30%	2.40%	0.10%	
27.00%	30.00%	10.00%	3.00%	1.00%	3.00%



36 - 45	46 - 55	56 - 65	66 - 75	76 and Over	Unknown
25.10%	23.80%	8.90%	2.00%	0.10%	0.00%
27.00%	30.00%	10.00%	3.00%	1.00%	3.00%

